

Massachusetts Health Equity Initiative Inventory

WEBINAR — December 3, 2024

The logo for manatt consists of the word "manatt" in white lowercase letters on an orange rectangular background.

manatt

AGENDA

- Welcome and Introductions
 - Overview of BCBSMA Foundation and Health Equity Action Plan
 - Health Equity Compact Remarks
- Introduction to the Massachusetts Health Equity Initiative Inventory
- How to Use the Inventory
- Looking Forward: Advancing Health Equity in the Massachusetts Health Care Delivery System

TODAY'S SPEAKERS



Kaitlyn Kenney Walsh

Vice President of
Policy and Research,
Blue Cross Blue Shield of
Massachusetts Foundation



Juan Fernando Lopera

Chief Diversity, Equity
and Inclusion Officer,
Beth Israel Lahey Health; Co-
Founder, Health Equity
Compact



Eboné Carrington

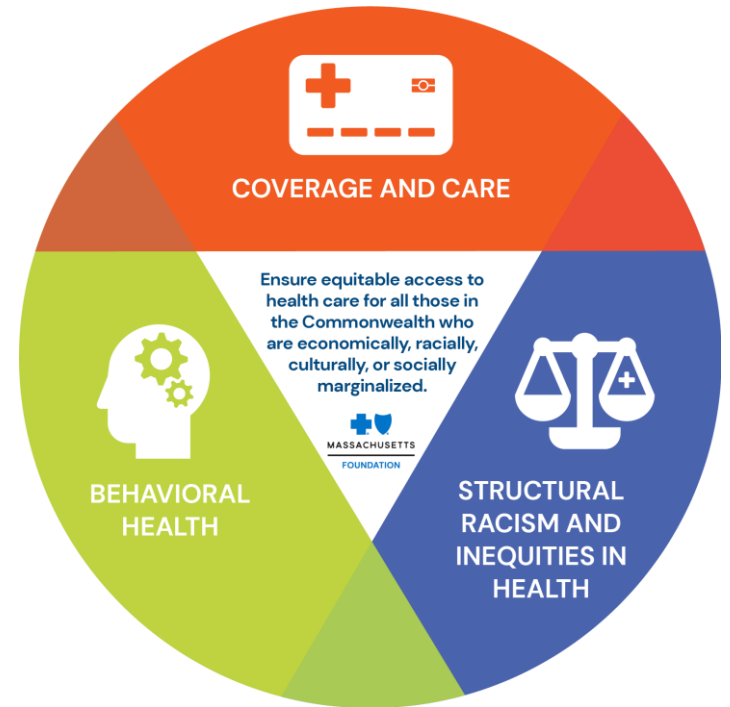
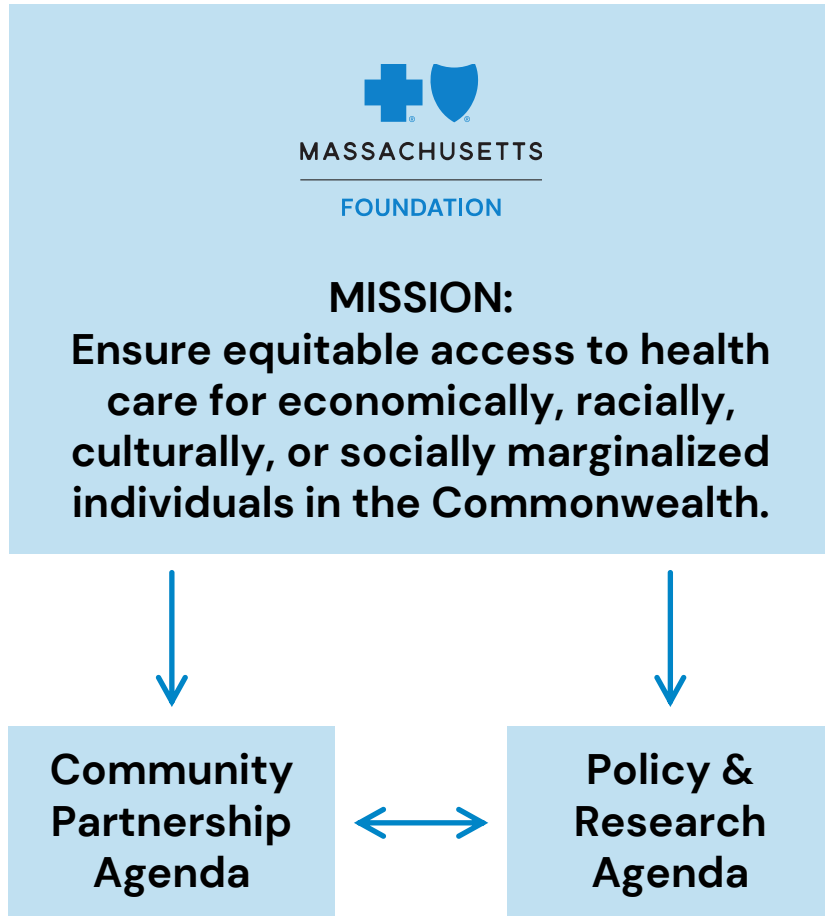
Managing Director,
Manatt Health



Bryant Torres

Senior Manager,
Manatt Health

BLUE CROSS BLUE SHIELD OF MASSACHUSETTS FOUNDATION



HEALTH EQUITY ACTION PLAN FRAMEWORK



HEALTH EQUITY COMPACT



The Health Equity Compact (the “Compact”) is a group of over 80 leaders of color who aim to advance health equity together in Massachusetts. Compact members are high-level executives and experts from a diverse set of health, business, labor, and philanthropic organizations, including hospitals, health centers, payers, academic institutions, and public health. We bring our lived experience, expertise, and commitment to our work to advance health equity.

For more information:
hec@massleague.org
[Healthequitycompact.org](https://healthequitycompact.org)

MASSACHUSETTS HEALTH EQUITY INITIATIVE INVENTORY

The Massachusetts Health Equity Initiative Inventory is a collection of interventions and programs being implemented to address racial, ethnic, and linguistic inequities in Massachusetts' health care delivery system.

OBJECTIVE

A tool for organizations across the health care delivery system in Massachusetts who are:

- At various stages in their health equity program development; and
- Looking to start or expand health equity programming.

SCOPE

Interventions and program to address racial and ethnic inequities within the health care delivery system, defined as the network of institutions, providers, resources, and processes that enable the delivery of health care services.

INTRODUCTION TO THE MASSACHUSETTS HEALTH EQUITY INITIATIVE INVENTORY

INTENDED VALUE AND PURPOSE OF INVENTORY



Value of Inventory

Inventory can help organizations build upon their health equity program planning, providing a centralized place for resources vs. having to conduct multiple web searches.



Content and Form

Inventory should be available online, easy to navigate, and be kept up to date with new initiatives and outcomes data.



Ongoing Support

Interviewees agree that in addition to the Inventory, other forms of support and action are necessary to advance health equity, including convenings, technical assistance, funding, structural/policy change.

METHODOLOGY

Initiatives were identified through a landscape scan and stakeholder input.
To be included in the Inventory, initiatives had to be:

- ✓ Actively underway in Massachusetts
- ✓ Focused on reducing a health inequity
- ✓ Aligned with the Health Equity Action Plan framework, clinical areas of focus, and primary populations of focus

↓

Clinical areas of focus

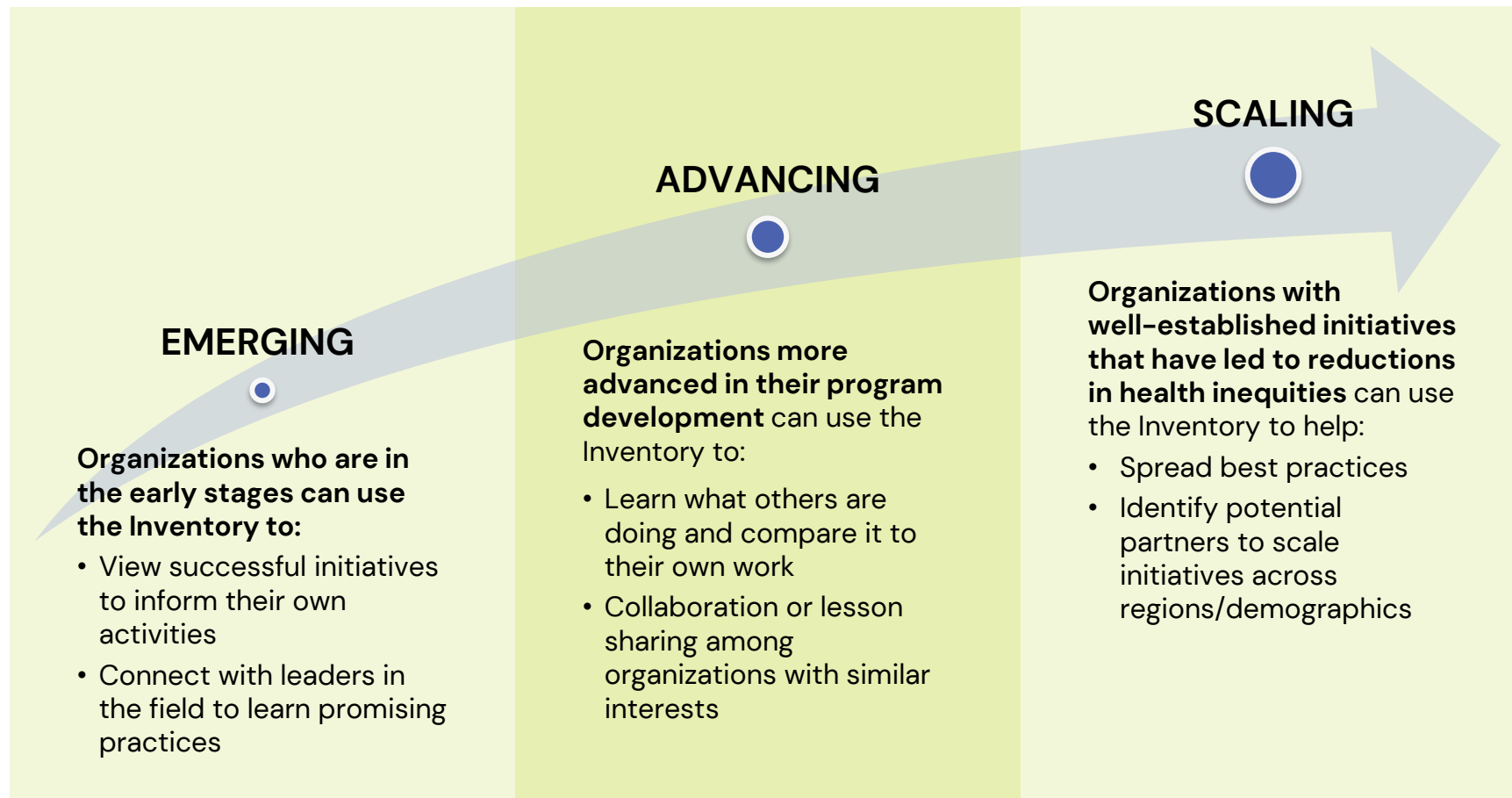
- Behavioral health
- Cancer
- Chronic disease
- Cross-cutting
- Maternal health
- Primary care

↓

Primary populations of focus

- People of color
- English as a second language or non-English speaking populations
- Immigrants
- Youth
- Birthing families
- Low-income individuals
- Those on Medicare and Medicaid
- Other populations

INVENTORY AS A TOOL FOR ORGANIZATIONS AT VARIOUS STAGES IN HEALTH EQUITY PROGRAMMING



State agencies, policymakers, and funders can use the Inventory to inform regional and statewide priorities, identifying potential gaps in initiative types, and guiding and/or aligning grantmaking priorities.

SUMMARY OF INVENTORY DATA



A collection of **148 interventions and programs** addressing racial, ethnic, and linguistic inequities in Massachusetts' health care delivery system, with each initiative categorized under one of the six components of the Health Equity Action Plan framework.



Provides an **aggregate view of the current health equity programming landscape** in Massachusetts.



Tool for Massachusetts health care organizations at different stages of their health equity program development. Funders or policymakers can also use this tool to further their health equity priorities (e.g., to inform grantmaking and programming priorities).

KEY THEMES FROM INVENTORY DATA

From 148 Inventory initiatives, the following themes emerged:

Common clinical areas of focus include maternal health, chronic disease, primary care, and behavioral health.

Just under half of the initiatives focus on people of color

All types of health care delivery organizations are working to advance equity

Most initiatives are based in the Boston region

There is limited quantitative outcomes data publicly available

Half of the initiatives focus on advancing “Accessible and Affordable Care that is Easy to Navigate”

DISCUSSION

Poll: How would you characterize where your organization is at in its health equity program development?

- a) No health equity programming**
- b) Emerging** or beginning to identify health equity program opportunities and priorities to implement
- c) Advancing** (i.e., actively implementing) one or more initiatives
- d) Scaling** well-established initiatives that have led to proven reductions of health inequities
- e) Other/NA**

HOW TO USE THE INVENTORY

OVERVIEW OF THE INVENTORY TOOL

The Inventory is an Excel Workbook with multiple tabs providing users with instructions and multiple ways to engage with the information:



How to Guide tab—users can view this tab to learn how to navigate the Pivot Table.



Table of Contents tab—lists descriptions of the categories included in the Pivot Table and hyperlinks to the categories.



Pivot Table tab allows users to filter the Inventory by various categories.



Initiative Inventory (All) tab provides users with the “raw” inventory data set.

INVENTORY DATA

For each initiative, users will see:

- Name of Initiative
- Name of Leading Entity
- Description of the Initiative
- Types of Staff Needed to Design and Implement the Initiative
- Outcomes/Impact (if available)
- Sources

Users will be able to filter via the below categories:

- Alignment with the Health Equity Action Plan Framework
- Clinical Area of Focus
- Primary Population of Focus
- Type of Implementing Entity
- Geographic Region of Focus
- Funding Source

WALK THROUGH THE INVENTORY

HOW TO USE THE INVENTORY

STEP 1

Go to Foundation's website:

<https://www.bluecrossmafoundation.org/publication/massachusetts-health-equity-initiative-inventory>

STEP 2

Download Inventory

STEP 3

Open Inventory and navigate to appropriate tab

- Pivot Table
 - How To Guide
 - Table of Contents
- Initiative Inventory (all raw data)

STEP 4

Filter raw data or use Pivot Table to research contents in Inventory

USE CASES



Community provider (e.g., primary care practice) looking to start a health equity initiative focused on behavioral health is interested in learning what similar practices are doing in this space.



Grantmaker developing new grants for reducing maternal health inequities want to learn more about the current work being done in this space.



A hospital wants to explore new ways to support and invest in their local community, with the goal of addressing structural inequities that drive health inequities.

QUESTIONS?

LOOKING FORWARD: ADVANCING HEALTH EQUITY IN THE MASSACHUSETTS HEALTH CARE DELIVERY SYSTEM

MASSACHUSETTS HEALTH EQUITY INITIATIVE INVENTORY: SUBMISSION FORM

Massachusetts Health Equity Initiative Inventory: *Submission Form*

bryant.m.torres@gmail.com [Switch account](#)



Not shared

* Indicates required question

Please read the following before submitting an initiative

The Blue Cross Blue Shield of Massachusetts Foundation's Health Equity Initiative Inventory is a collection of interventions and programs being implemented to address racial, ethnic, and linguistic inequities in Massachusetts' health care delivery system. **Please use this form to provide updates to existing initiatives in the Inventory or add new Initiatives not captured in the Inventory. All requested updates or recommended additions will be reviewed before periodic updates to the Inventory are made.**

To be included in the Inventory, an initiative must be:

- Focused on addressing racial and ethnic inequities in the health care delivery system. The health care delivery system refers to the network of institutions, providers, resources, and processes that enable the delivery of health care services; this includes things like doctor's offices, health centers, emergency rooms, hospitals, and behavioral health (including mental health and substance use disorder treatment). *Social systems, such as education, housing, nutrition, and transportation, and related policies are outside of the direct purview of the health care delivery system and therefore out of scope for the Inventory.*
- Actively underway in Massachusetts.
- Aligned with the [Action Plan framework](#).

FINAL SURVEY

- 1 How can the Foundation further support building awareness and understanding of initiatives that seek to advance racial and ethnic equity in the health care delivery system in Massachusetts?
 - a. Continual updates to the Inventory
 - b. Convenings/Action Labs to help elevate and scale best practices
 - c. Other

- 2 Are there any specific elements of the Inventory that you would like to receive more clarification on, or would like to learn more about in an issue brief or additional webinar? (*e.g., specific conditions or populations of focus*)

The survey will appear in your web browser once the webinar concludes. A link to the survey will also be included in the follow-up email sent to all webinar attendees.

THANK YOU!

If you have any questions or comments about today's presentation, please contact **Kaitlyn Kenney Walsh** (Kaitlyn.KenneyWalsh@bcbsma.com).