

2015



IMPACT

Health reform will not be complete until we make high-quality care *affordable* as well as *accessible*. For the past 15 years, we have been working toward meaningful change in the face of dynamic and sometimes challenging policy landscapes. But our ultimate goal is clear: to see *improved access, better health outcomes, and lower costs* for our most vulnerable residents. Here are some recent highlights.

15 years

2014-2016 AREAS OF FOCUS

COVERAGE & CARE

Coverage does not always equal care. We are committed to supporting programs that help low-income consumers obtain, keep, and use their insurance to access high-quality, affordable care. We conduct research and develop strategies to increase coverage for those most in need.



EXPAND ACCESS
TO HEALTH CARE
FOR LOW-INCOME
& VULNERABLE
POPULATIONS

AFFORDABILITY

Although the Commonwealth leads the nation in health insurance coverage, consumers still struggle with the cost of health care. We continue to document that impact to help ensure that our most vulnerable residents can get and afford the care they need.

BEHAVIORAL HEALTH

Access to behavioral health is uneven, and consumers often have difficulty getting the right combination of care when they need it. We are exploring methods for expanding access and eliminating barriers to integrating behavioral and physical health care.



SOCIAL EQUITY

Social, environmental, and behavioral factors account for 60 percent of health outcomes, yet we continue to spend more on medical care than on social services. Through research and grantmaking, we are examining the impact that spending on social services can have on health outcomes.

GRANTMAKING

We organize our funding priorities into defined programs that are closely tied to our mission and areas of focus.

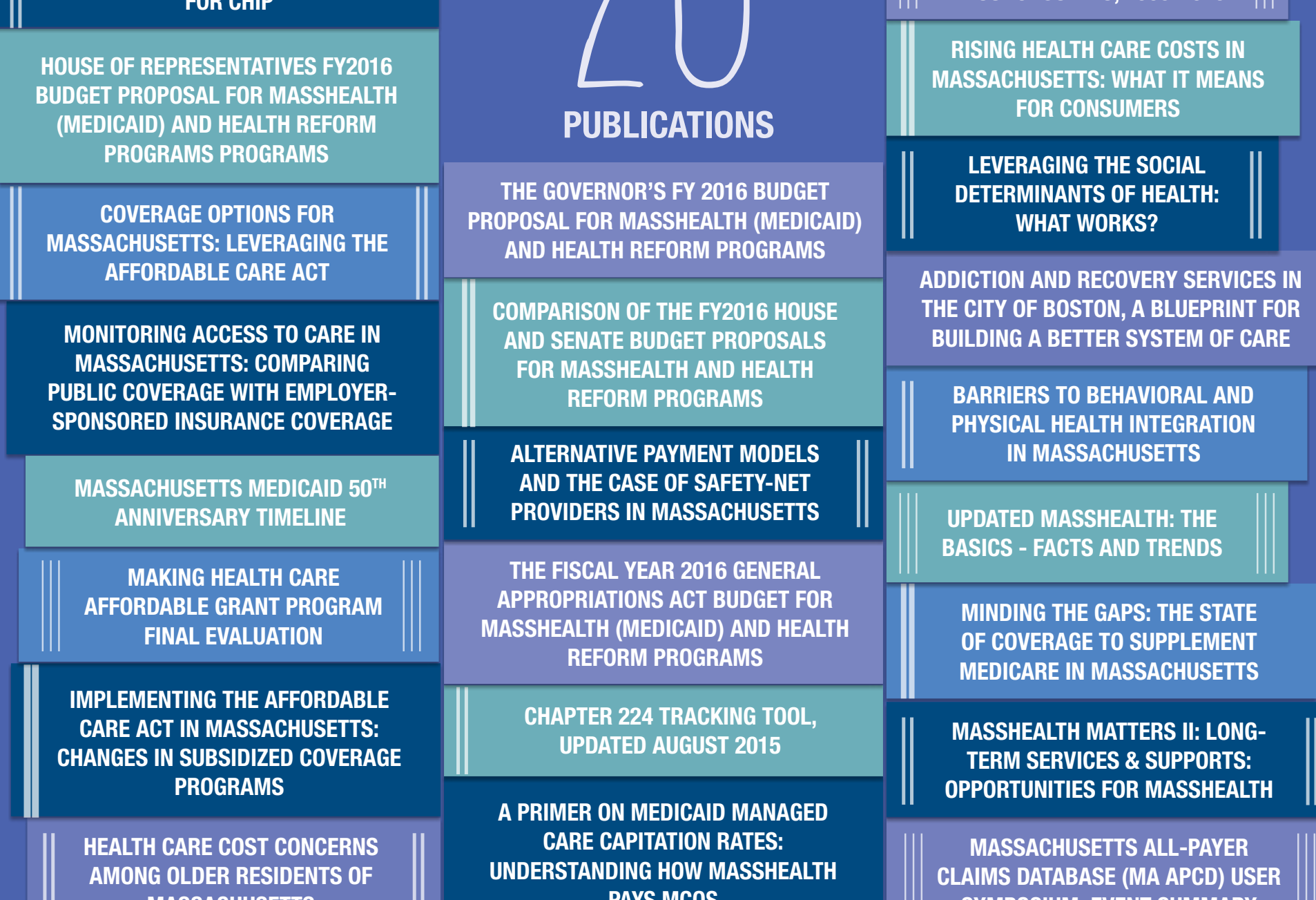


IMPACT

We fund programs and projects that promote sustainable improvements in health care access for low-income and vulnerable people. Through our grantmaking, we also identify trends that inform our policy work and bring to scale best practices and lessons learned. Current funding priorities include integrating behavioral health care and primary care, connecting low-income consumers with coverage and care, strengthening advocacy for health access, and examining the impact that social service spending can have on health outcomes and costs.

POLICY & RESEARCH

The focus of our policy and research projects is the development of effective policy solutions through impartial and timely research and analysis.



IMPACT

Our work centers on access and affordability as well as how barriers to care—whether regulatory, financial, or other—seriously impact people's health outcomes, especially among low-income and vulnerable populations. Working with nationally recognized researchers and academics, we focus on projects that identify effective solutions to local and national health care issues. Our publications are widely regarded as key resources for policy makers and those interested in Massachusetts health care issues.

THOUGHT LEADERSHIP

We bring awareness of important health care issues to people across the Commonwealth through collaborations, convenings, media and publications.



IMPACT

We are proud of our ongoing role as an impartial convener of thoughtful public discussion. The Foundation team is widely recognized for their expertise in many aspects of health care and is often called upon to serve on committees and task forces around the state. Foundation-sponsored conferences assemble stakeholders from government, advocacy, academia, and the provider community to discuss timely health care issues. Much of our work is covered by local and industry press and we also proactively seek opportunities to make health care policy more accessible through guest columns and presentations.

PROGRAMS

The Foundation runs three programs directly related to our mission of expanding access to health care.

The **Massachusetts Medicaid Policy Institute (MMPI)** is a **FULL-TIME POLICY PROGRAM** of the Foundation, devoted to **BROADENING THE UNDERSTANDING** of the Massachusetts Medicaid program, **MassHealth**.

MMPI **PROMOTES THE DISCUSSION OF EFFECTIVE POLICY SOLUTIONS** through **EDUCATIONAL MATERIALS** and **in-depth policy papers**, and **hosting CONVENINGS & WEBINARS** attracting a **WIDE RANGE OF STAKEHOLDERS**.



18 DAY PROGRAM
19 EMERGING LEADERS

RESULTING IN THE
NEXT GENERATION OF
COMMUNITY HEALTH LEADERS



75 SPEAKERS
12 JOURNALISTS

RESULTING IN 66 NEWS STORIES

IMPACT

How do our programs create change? The Massachusetts Medicaid Policy Institute produces independent, nonpartisan research and analysis about MassHealth, expanding understanding of this important coverage program and broadening the dialogue about ways to improve its effectiveness. The Massachusetts Institute for Community Health Leadership develops and nurtures emerging health care leaders. The Health Coverage Fellowship expands the capacity of the media to cover issues related to health reform and access to care.

2015



IMPACT

The Blue Cross Blue Shield of Massachusetts Foundation and Blue Cross Blue Shield of Massachusetts are independent licensees of the Blue Cross and Blue Shield Association.

©2015 – BCBSMA Foundation. All rights reserved.

15 years